



## ABOUT INTEGRATE

Despite being a key driver of the maritime economy in the European Atlantic Area, Atlantic aquaculture faces significant challenges: environmental management at farming sites, the European north-south divide, regulatory hurdles, long licensing processes, low levels of consumer knowledge and acceptance, competition for space with other maritime activities, etc. INTEGRATE contributes to overcoming these challenges by facilitating the transition towards commercial Atlantic Integrated Multi-Trophic Aquaculture (IMTA).

## WORK PACKAGES

1. Project coordination
2. Project communication
- 3. Capitalization**
4. Understanding IMTA best-practices in the Atlantic Area
5. IMTA's environmental contribution
6. Defining a Framework for IMTA development: Action Plans for the Atlantic Area

## QUICK FACTS

<b>PROGRAMME</b>	<b>INTERREG ATLANTIC AREA</b>
<b>DURATION</b>	<b>June 2017 –May 2020 (36 months)</b>
<b>PARTNERSHIP</b>	<b>8 partners from Spain, Portugal, France, Ireland and United Kingdom</b>
<b>COORDINATOR</b>	<b>11 associated partners</b> <b>Fundación Centro Tecnológico Acuicultura de Andalucía (CTAQUA)</b>



## SUMMARY OF WORK PACKAGE 3 - Capitalization

The aim of this work package is to transfer IMTA experience and best practice into a series of events and formats that will take that knowledge to interested stakeholders such as students, partners in industry and academia.

The process of transferring information takes different forms; first, online IMTA communities are created using professional networking stages such as LinkedIn. Secondly, all of the INTEGRATE partners produce training and learning materials about their IMTA pilot actions as well as aspects of IMTA related to their experience and to their country. These are curated and made available online as open access learning material. New packages will be added by partners throughout the duration of the project.

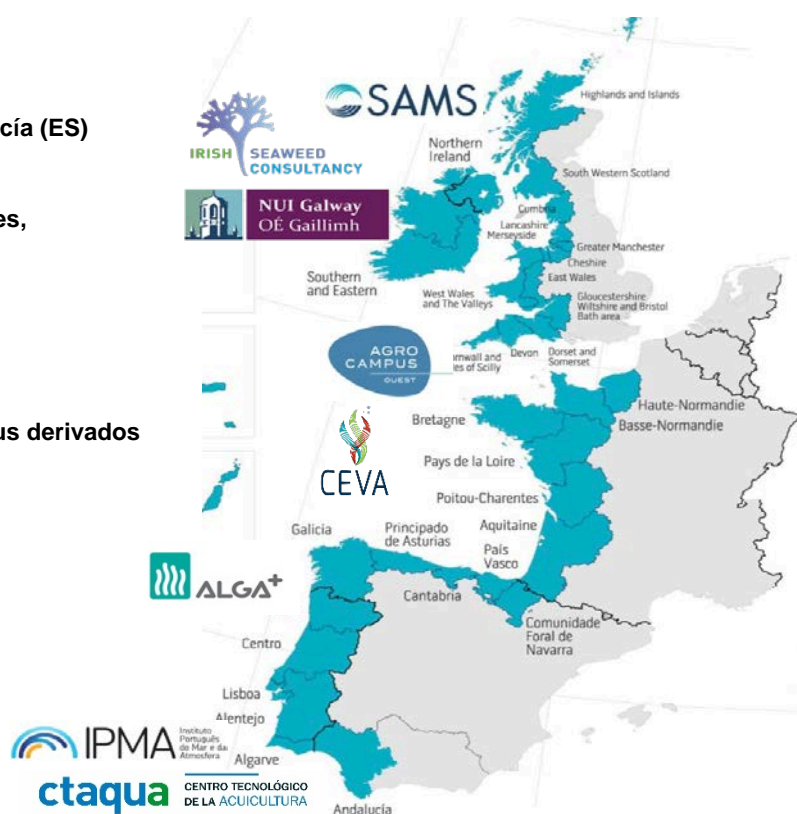
Thirdly, each partner undertakes thematic workshops comprised of IMTA experts, relevant bodies responsible for aquaculture policy, as well as regional economic development agencies. These will be held into the 2<sup>nd</sup> year of the project, to fully benefit from the development of the IMTA pilot actions being undertaken by partners in Ireland, France, Spain & Portugal. The third action will also lead those partners carrying out pilot actions to hold open days at their 'living labs' to discuss the practicalities of the work with industry. Fifthly, and finally, each partner will summarise the legislative situation in their country as regards IMTA. This will feed into a policy document which will assist the project in raising the profile of IMTA with local and national policy bodies within the member countries.

## PARTNERSHIP

- **Fundación Centro Tecnológico Acuicultura de Andalucía (ES)**
- **Irish Seaweed Consultancy (IE)**
- **Institut National Supérieur des Sciences Agronomiques, Agroalimentaires, Horticoles et du Paysage (FR)**
- **Scottish Association for Marine Science (UK)**
- **Instituto Português do Mar e Atmosfera, I.P. (PT)**
- **National University of Ireland Galway (IE)**
- **ALGAplus Produção e Comercialização de algas e seus derivados Lda. (PT)**
- **Centre d'Etude et de Valorisation des Algues (FR)**

## TYPE OF PARTNER

- **Research and innovation organisations**
- **Small and medium enterprises**
- **Universities and higher education**
- **National public organisations**
- **Large enterprises**



## Learn more at:

[www.integrate-imta.eu](http://www.integrate-imta.eu)

 @INTEGRATE\_IMTA

## Contact us:

Project Coordinator  
Clive Dove  
e-mail: [c.dove@ctaqua.es](mailto:c.dove@ctaqua.es)

Work Package 3 Leader  
Dr Adam Hughes  
e-mail: [adam.hughes@sams.ac.uk](mailto:adam.hughes@sams.ac.uk)