

Adapted from www.dfo-mpo.gc.ca



ABOUT INTEGRATE

Despite being a key driver of the maritime economy in the European Atlantic Area, Atlantic aquaculture faces significant challenges: environmental management at farming sites, the European north-south divide, regulatory hurdles, long licensing processes, low levels of consumer knowledge and acceptance, competition for space with other maritime activities, etc. INTEGRATE contributes to overcoming these challenges by facilitating the transition towards commercial Atlantic Integrated Multi-Trophic Aquaculture (IMTA).

WORK PACKAGES

1. Project coordination
2. Project communication
3. Capitalization
- 4. Understanding IMTA best-practices in the Atlantic Area**
5. IMTA's environmental contribution
6. Defining a Framework for IMTA development: Action Plans for the Atlantic Area

QUICK FACTS

PROGRAMME

INTERREG ATLANTIC AREA

DURATION

June 2017 – May 2020
(36 months)

PARTNERSHIP

8 partners from Spain, Portugal, France, Ireland and United Kingdom

11 associated partners

COORDINATOR

Fundación Centro Tecnológico Acuicultura de Andalucía (CTAQUA)



SUMMARY OF WORK PACKAGE 4 - Understanding IMTA best-practices in the Atlantic Area

Work Package 4 aims to identify the knowns and unknowns of IMTA and its best practice, building a suitable pathway for its continued development in the Atlantic Area.

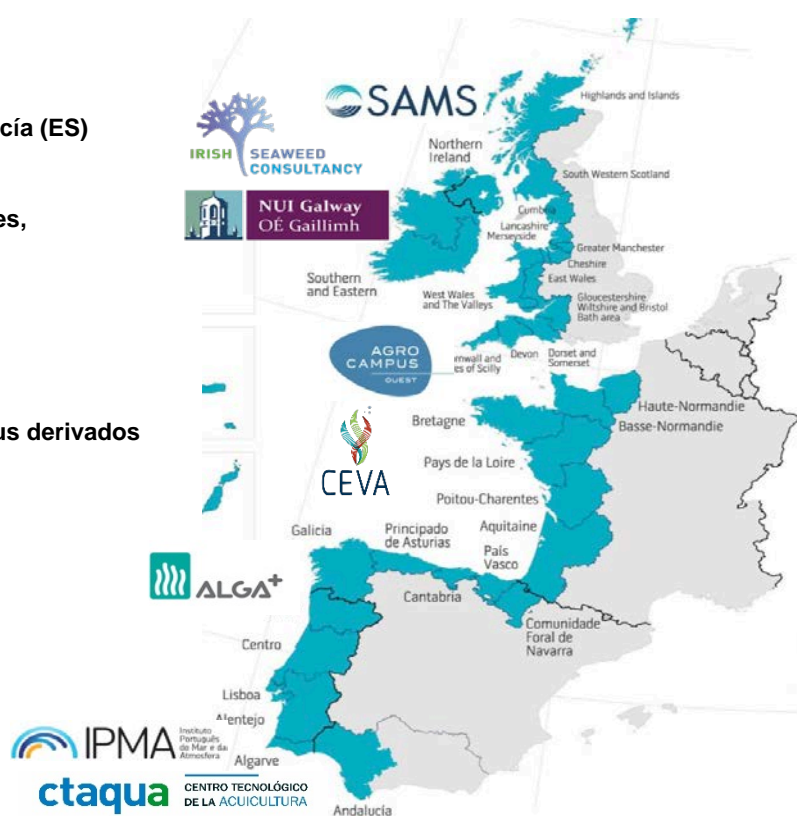
- **Action 1:** State-of-the-art review of the academic and grey literature to explore the technical, economic, environmental and societal extent of IMTA in Atlantic Area countries.
- **Action 2:** Thematic round-tables with national expert groups to identify the bottlenecks, challenges and priorities for IMTA development in Atlantic Area countries. 4 round-tables per country to discuss each of the following topics: i) technical, ii) economic, iii) environmental and iv) societal aspects of IMTA. The round-tables will also provide the opportunity to discuss IMTA with experts from outside the Atlantic Area.
- **Actions 3, 4 & 5:** Pilot actions:
 3. Pilot 1 tests new eco-friendly technologies and high value seaweeds (*Codium tomentosum*, *Palmaria palmata*, *Porphyra purpurea*, *Himanthalia elongata* and *Ulva spp.*) applied to IMTA.
 4. Pilot 2 focuses on land-based eco-friendly *Porphyra purpurea* + oyster systems.
 5. Pilot 3 tests and develops an IMTA eco-friendly standardised model for the Atlantic land-based semi-extensive aquaculture industry. This explores different combinations of fish, bivalves and seaweeds in earthen ponds.
- **Action 6:** A knowledge compilation of results from Actions 1-5 will result in a set of best practice guidelines for IMTA across the Atlantic Area.

PARTNERSHIP

- **Fundación Centro Tecnológico Acuicultura de Andalucía (ES)**
- **Irish Seaweed Consultancy (IE)**
- **Institut National Supérieur des Sciences Agronomiques, Agroalimentaires, Horticoles et du Paysage (FR)**
- **Scottish Association for Marine Science (UK)**
- **Instituto Português do Mar e Atmosfera, I.P. (PT)**
- **National University of Ireland Galway (IE)**
- **ALGAplus Produção e Comercialização de algas e seus derivados Lda. (PT)**
- **Centre d'Etude et de Valorisation des Algues (FR)**

TYPE OF PARTNER

- **Research and innovation organisations**
- **Small and medium enterprises**
- **Universities and higher education**
- **National public organisations**
- **Large enterprises**



Learn more at:

www.integrate-imta.eu

 @INTEGRATE_IMTA

Contact us:

Project Coordinator
Clive Dove
e-mail: c.dove@ctaqua.es

Work Package 4 Leader
Jessica Ratcliff
e-mail: jessica.ratcliff@irishseaweed.com